



GLANSIS Update

Great Lakes Panel on ANS – Spring 2024
Rochelle Sturtevant



GREAT LAKES
AQUATIC NONINDIGENOUS SPECIES
INFORMATION SYSTEM



Staff



Rochelle Sturtevant

GLANSIS Program Manager and
AIS Outreach

Michigan Sea Grant



El Lower

Communications Specialist

Michigan Sea Grant



Connor Shelly

GIS Specialist

Michigan Sea Grant



Rebecca Nielsen

Education Specialist

Michigan Sea Grant



Ashley Elgin

Research Ecologist

NOAA-GLERL



Doran M. Mason

Research Ecologist

NOAA-GLERL

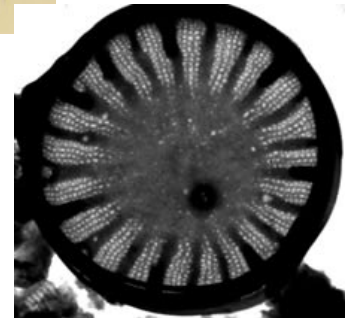
Hiring soon:

- 2 Part-time hourly Graduate Students to work on Data entry and profiles
- Summer Fellows

Notable Changes

Removed/Reclassified

- *Cyclops strenuus* will be delisted (likely misidentified as *C. sibiricus*, pending review)
- *Discostella pseudostelligera* and *Stephanodiscus binderanus* – Native (based on paleorecords)
- *Discostella woltereckii* and *Hymenomonas roseola* – No evidence of continuing populations, failed introductions. *Thalassiosira bramaputrae* and *Pleurosira laevis* may also be a failed introduction (review pending)
- *Cyclotella atomus* – Range Expander (based on paleorecords pending review)
- *Sphacelaria fluviatilis* – Moved back to watchlist pending review. No records below the ordinary high water mark (though present in the basin, it doesn't meet listing criteria if not below the high water mark)
- *Barbarea* complex will be added to established - *Barbarea vulgaris*, *B. verna*, and *B. stricta* (Pending review)
- *Alternanthera philoxeroides* (added to watchlist)





New Assessments

<https://www.glerl.noaa.gov/glansis/assessments>

Only a handful of new assessments have been published since our report last June, but we have >30 in review!



Pilot Project Involving Undergraduate/Graduate Classes in Assessment/Profile Review and Development

- **Reuben Keller, Loyola** – Upper level Undergraduate/MS Invasion Biology Course
- **Abigail Fusaro, Wayne State** – Undergraduate Ecology Course
- **Donna Kashian, Wayne State** – Large Introductory Biology Course

Sneak peeks are very promising, we expect to have full student work (reviewed by the instructors) back to us by the holiday. Next steps:

- Dual review by GLANSIS Team members, additional quality control revisions as needed
- Normal review (at least 1 expert review, 2 if new or substantial changes, NAS review of profiles)
- Student work will be acknowledged, possibility for co-authorship.



GLANSIS “1st Grand Review”

- Estimated ~30 assessments and profiles ready for this first program
- All drafts (assessments and profiles) will be available by 2/20/2025
- **Recruiting now for expert reviewers!**
 - We need 2 reviewers per species
 - Honoraria possible
 - Contact Rochelle.Sturtevant@noaa.gov by 1/15/2025 if you are interested.
- **Save-the Date – Thursday, March 6, 2025**
 - Virtual program (organized taxonomically)
 - Open review and comment period (if you have information on any species, you can pop in for that portion of the program!)

Invasive Species Threat Assessments

USCRP Grant – “Identifying at risk habitats for walleye, yellow perch, and lake whitefish in the US Great Lakes amid aquatic invasive species impacts”

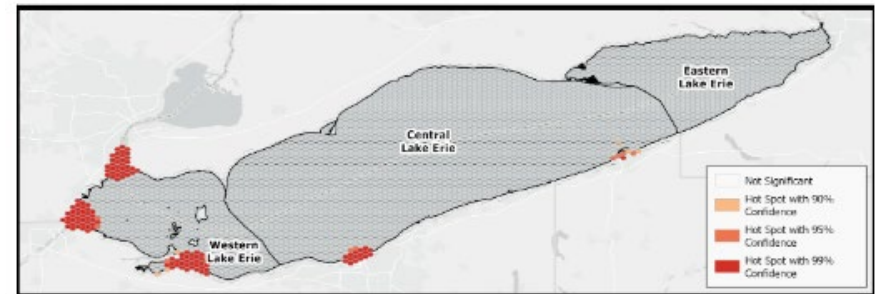
- Connor Shelly is leading this work.

Release of GLANSIS Impact Database --> New opportunities to examine the impacts of AIS on native species!

Invasive Species Threats Assessment

The Restoration of Cisco in Lake Erie

Connor Shelly, Joseph Redinger, and Rochelle Sturtevant
GLANSIS, Michigan Sea Grant
June 2024



Invasive Species Language Workshop report:
<https://www.michiganseagrant.org/wp-content/uploads/2024/10/Invasive-Species-Language-Workshop-Report.pdf> .

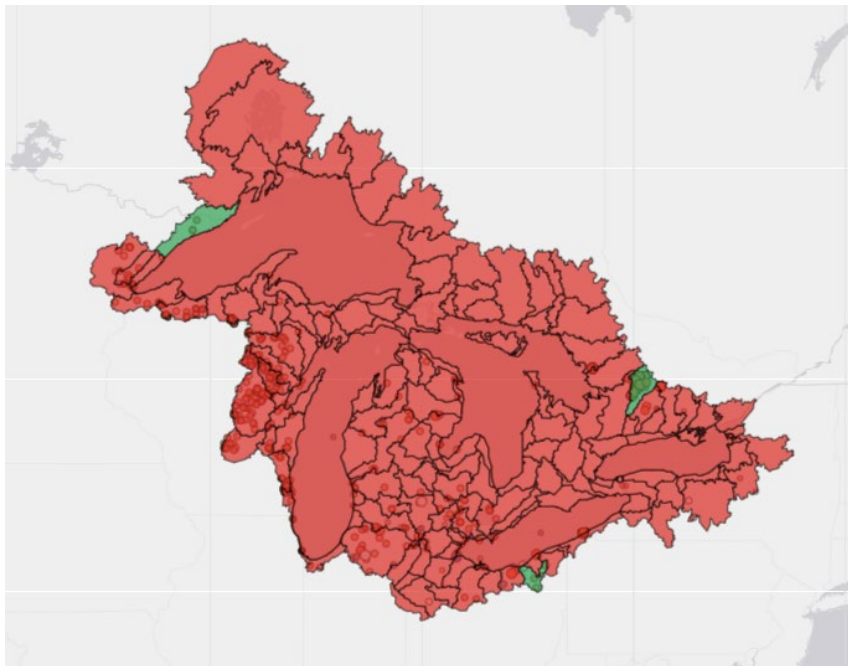


Peer-reviewed interaction of the paper will be in the ICAIS special issue of MBI next year

Mystery Snail Collection



At our landing page, you will find curated tools to support collection efforts. If you are aware of any populations not depicted on our distribution map, please contact us!



Collection status layer (available using the layer control) depicts areas still in need of collections at a HUC8 scale.

- Regions will update to green as collections come in!



For those interested in contributing, see our landing page at...

www.glerl.noaa.gov/glansis/contributeSnails.html