



GLANSIS Update

Great Lakes Panel on ANS – Spring 2024
Rochelle Sturtevant



GREAT LAKES
AQUATIC NONINDIGENOUS SPECIES
INFORMATION SYSTEM



Staff Changes



Rochelle Sturtevant

GLANSIS Program Manager and
AIS Outreach

Michigan Sea Grant



El Lower

Communications Specialist

Michigan Sea Grant



Connor Shelly

GIS Specialist

Michigan Sea Grant



Rebecca Nielsen

Education Specialist

Michigan Sea Grant



Ashley Elgin

Research Ecologist

NOAA-GLERL



Ed Rutherford

Research Fishery Biologist

NOAA-GLERL



Doran M. Mason

Research Ecologist

NOAA-GLERL

Notable Changes

New Range Expander

- *Urnatella gracilis* (freshwater goblet worm)

Native range includes Lake Erie and inland waters of IL, IN, MI, OH, PA.

Nonindigenous reports for Lake Superior and St. Lawrence River



Photo by David Hayes



New Assessments

<https://www.glerl.noaa.gov/glansis/assessments>

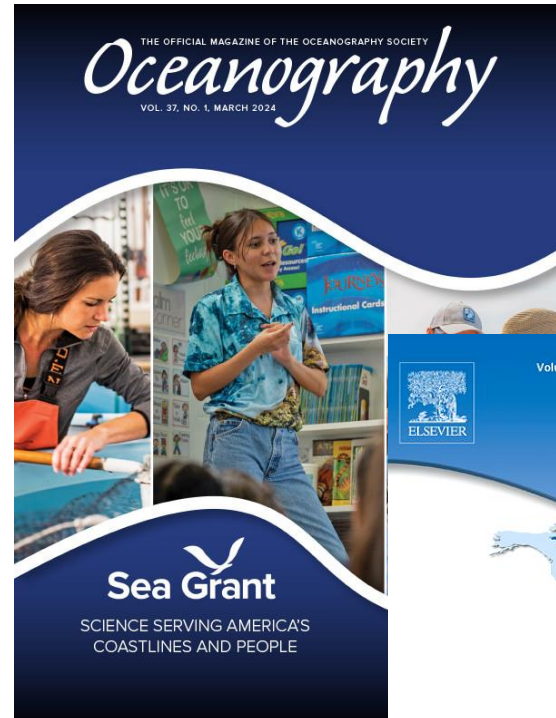
+25 -> 109 species assessments



New Publications

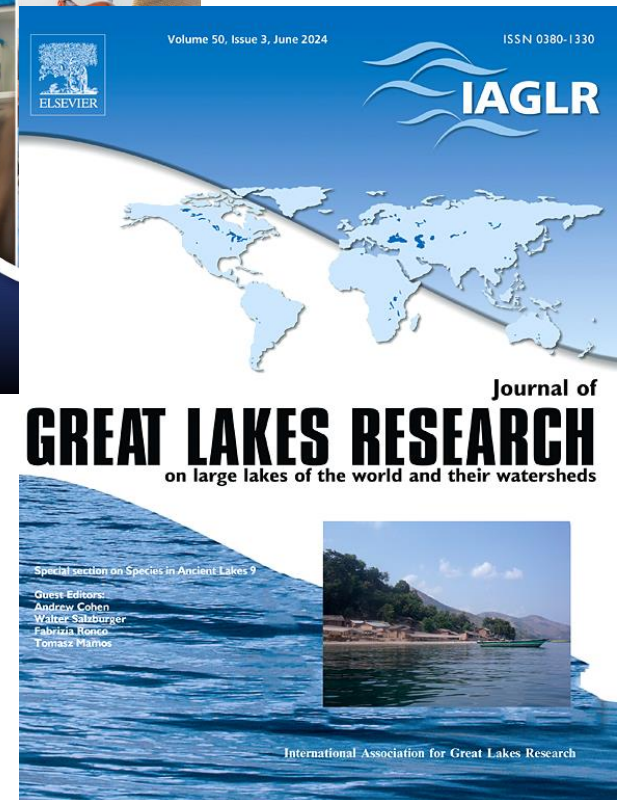
Spotlight – Alien Language: Reflections on the Rhetoric of Invasion Biology

<https://tos.org/oceanography/article/alien-language-reflections-on-the-rhetoric-of-invasion-biology>



The Great Lakes' Most Unwanted: Characterizing the Impacts of the Top Ten Great Lakes Aquatic Invasive Species

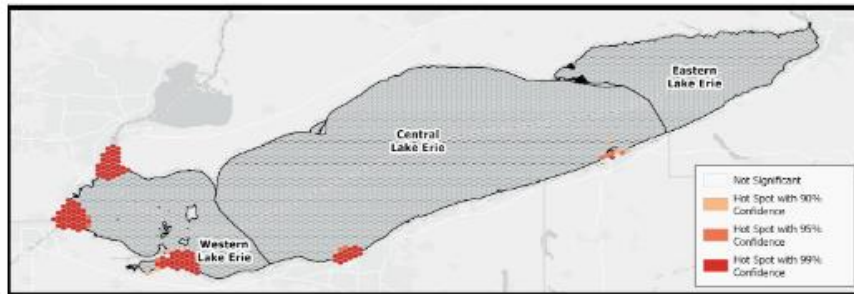
<https://www.sciencedirect.com/science/article/pii/S0380133024001138>



Invasive Species Threat Assessments

GLFC – Lake Erie Cisco Threats Assessment
Workshop
June 18&20, 2024

- We now have the capacity to search the impact database on the name of impacted native species



Invasive Species Threats Assessment

The Restoration of Cisco in Lake Erie

Connor Shelly, Joseph Redinger, and Rochelle Sturtevant
GLANSIS, Michigan Sea Grant

June 2024



Mystery Snail Collection



- To support worldwide research being done at George Mason University (Fowler lab), GLANSIS is helping to facilitate the collection of mystery snails (*Cipangopaludina* spp.) for the Great Lakes region.
- Researchers will do both genetic verification of the species id AND parasitology.
- For those interested in contributing, see our landing page at...

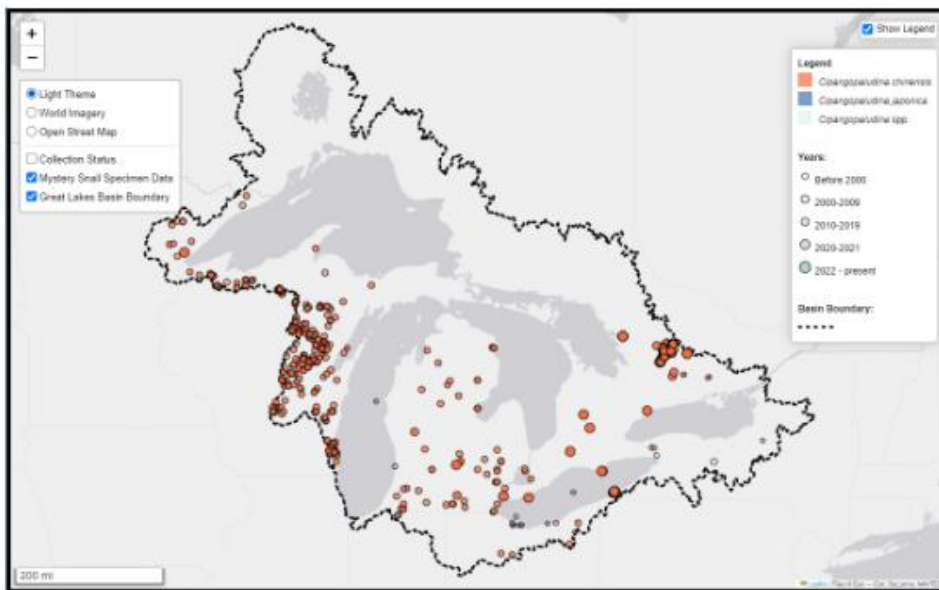


www.glerl.noaa.gov/glansis/contributeSnails.html

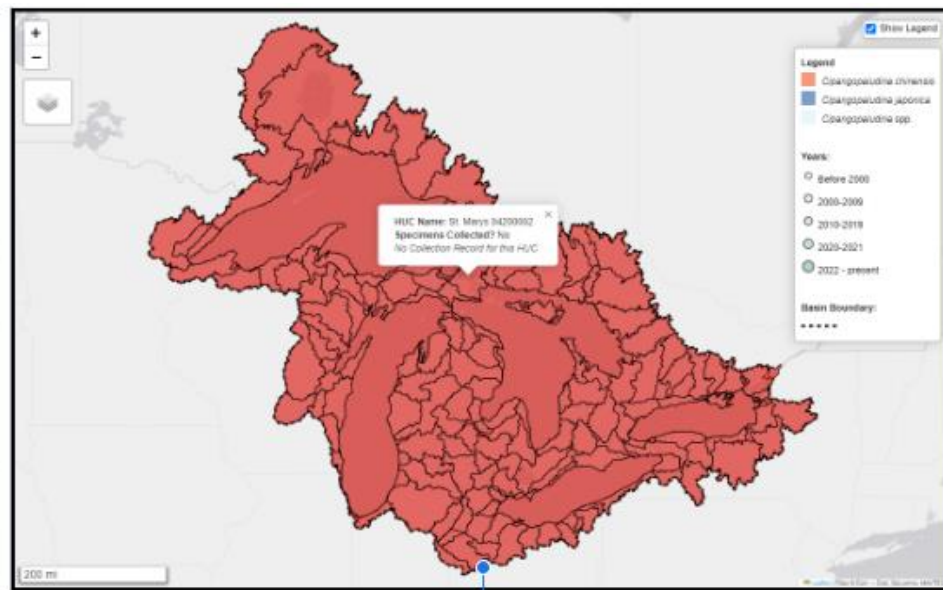
Mystery Snail Collection



At our landing page, you will find curated tools to support collection efforts. If you are aware of any populations not depicted on our distribution map, please contact us!



Interactive map of distribution data for *Cipangopaludina* spp. in the Great Lakes Region. Click on a record to view more information or toggle layers using the control on the left.



Collection status layer (available using the layer control) depicts areas still in need of collections at a HUC8 scale.

- Regions will update to green as collections come in!



Mystery Snail Collection



Please collect 30-100 live snails per independent waterbody

Pack in a styrofoam box – wrap in paper towels dipped in the freshwater they came from for humidity. If shipping July-August, add a cool pack (any kind) separated with a cloth rag (to prevent snails from freezing). Include location and collection date information in the box. Seal well!

Ship to Daya Hall-Stratton at the Potomac Science Center, 350 Mason Ferry Ave., Woodbridge, VA 22191

Email dhallstr@gmu.edu (so they know to look for the package) with a cc to oar.glerl.glansis@noaa.gov (so we can update the webpage)